

REVISION BS

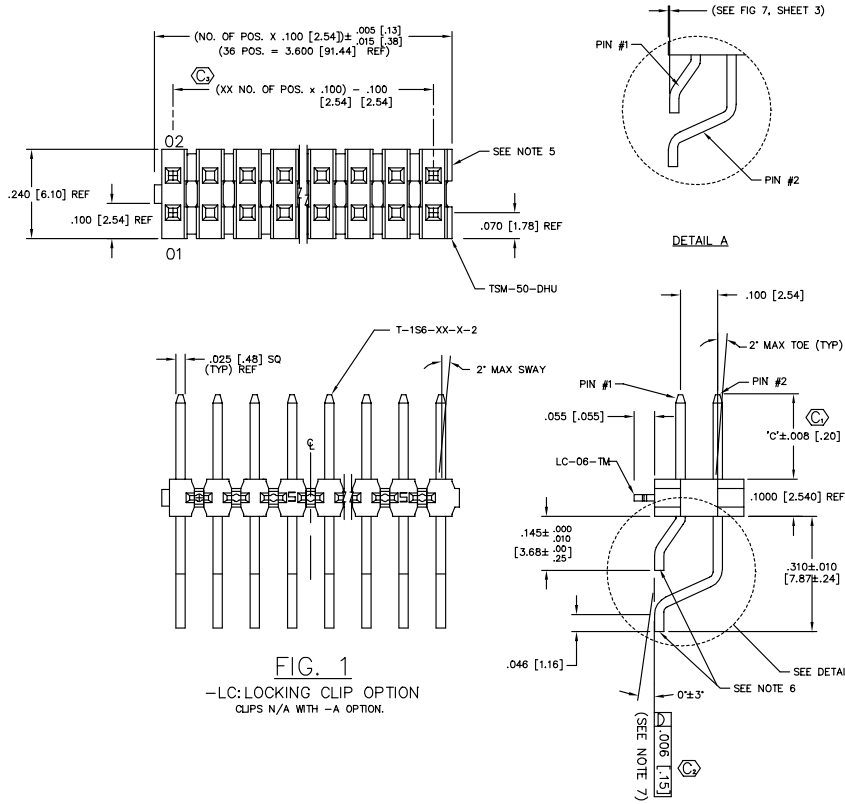


FIG. 1

-LC: LOCKING CLIP OPTION
CLIPS N/A WITH -A OPTION.

DIMENSIONS ARE IN INCHES		UNLESS OTHERWISE NOTED		TOLERANCES ARE:		TITLE:		DWG NO.:	
ONE PLACE DECIMALS ±.1 [3]	THREE PLACE DECIMALS ±.005 [13]	ANGLES ±2°	TERMINAL STRIP		TSM-1XX-XX-XXX-XX-XX-XXX-XX		SHEET 1 OF 3		
TWO PLACE DECIMALS ±.01 [3]	FOUR PLACE DECIMALS ±.0020 [51]		DOUBLE SURFACE MOUNT						

TSM-1XX-XX-XXX-XX-XX-XXX-XX
 NO. OF POSITIONS
 -02 THRU -36
 LEAD STYLE
 (SEE TABLE 1)

- PLATING SPEC.
- T: TIN -SPECIFY -T IN TERMINAL SUFFIX -X
 - S: SELECTIVE -SPECIFY -S IN TERMINAL SUFFIX -X
 - L: SELECTIVE -SPECIFY -L IN TERMINAL SUFFIX -X
 - F: FLASH SELECTIVE -SPECIFY -F IN TERMINAL SUFFIX -X
 - H: HEAVY GOLD -SPECIFY -H IN TERMINAL SUFFIX -X
 - P: GOLD FLASHED PALLADIUM NICKEL -SPECIFY -P IN TERMINAL SUFFIX -X
 - TL: TIN/LEAD -SPECIFY -TL IN TERMINAL SUFFIX -X
 - STL: SELECTIVE TIN/LEAD -SPECIFY -STL IN TERMINAL SUFFIX -X
 - SM: SELECTIVE HEAVY GOLD, MATTE TIN TAIL
 - LM: SELECTIVE LIGHT GOLD, MATTE TIN TAIL
 - FM: FLASH SELECTIVE GOLD, MATTE TIN TAIL
 - TM: MATTE TIN

- OPTION #3
- P: PICK & PLACE PAD, SEE FIG. 3 (4 POSITION MINIMUM, USE PPP-08) (NOT AVAILABLE WITH -K OPTION)
 - TR: TAPE & REEL (29 POS MAX) (AVAILABLE FOR -DH ONLY)
 - K: POLYAMIDE FILM (SEE FIG. 5, SHT. 2) (NOT AVAILABLE WITH -P OPTION) (USE K-500-300) (4 POSITION MINIMUM)
- OPTION #2
- POLARIZED POSITION: SPECIFY OMITTED PIN

- ROW OPTION
- DH: DOUBLE HORIZONTAL (USE TSM-50-DHU)
 - MT: MIXED TECHNOLOGY (SEE FIG. 4 & TABLE 1) (NOT AVAILABLE WITH -LC, -SL, -TR OR -A OPTIONS)

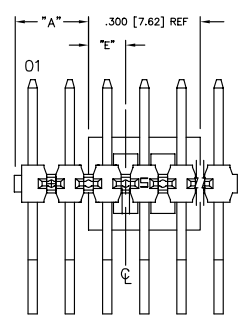
- NOTES:
1. (C) REPRESENTS A CRITICAL DIMENSION.
 2. DELETED
 3. DELETED
 4. DELETED
 5. .005 [13] MAX CUT FLASH.
 6. .002 [51] MAX BURR, MUST BE AWAY FROM SMT BOARD SIDE.
 7. DELETED
 8. CUT TO POSITION BODIES TO BE MULTI-CUT OR ROTO-CUT ONLY, NEVER AIR CUT.
 9. TUBE POSITIONS 5-36, BULK PACKAGE POSITIONS 2-4.
 10. 3 LBS. MIN PUSHOUT FORCE.

BS

ROW OPTION	LEAD STYLE	BOTTOM ROW PIN #1	TOP ROW PIN #2	'c'
-DH	-01	T-1S6-09-X-2	T-1S6-20-X-2	.230 [5.84]
-DH	-02	T-1S6-09-X-2	T-1S6-20-X-2	.320 [8.13]
-DH	-03	T-1S6-09-X-2	T-1S6-20-X-2	.420 [10.67]
-MT	-01	T-1S6-08-X-2	T-1S6-20-X-2	.230 [5.84]
-MT	-02	T-1S6-15-X-2	T-1S6-20-X-2	.320 [8.13]
-MT	-03	T-1S6-09-X-2	T-1S6-20-X-2	.420 [10.67]

No OF POS	S/S BOW
02 - 10	.0030 [80]
11 - 20	.0050 [127]
21 - 30	.0070 [178]
31 - 36	.0080 [203]

DIFFERENT AS SHOWN, OTHERWISE SAME AS FIG. 1.



FOR EVEN: "A" = $\frac{(\text{NO. OF POS.} \times .100 [2.54]) - .300 [7.62]}{2} + .050 [1.27]$
 FOR ODD: "A" = $\frac{(\text{NO. OF POS.} \times .100 [2.54]) - .300 [7.62]}{2}$

POS.	"E"
ODD	.150 [3.81]
EVEN	.100 [2.54]

FIG. 3

-P: PICK & PLACE PAD
PLACE PPP-08 ON (C) AS SHOWN

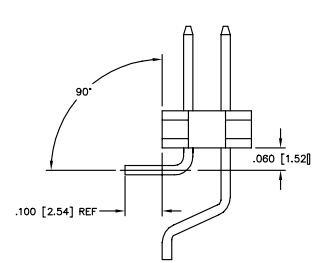
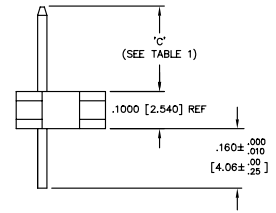


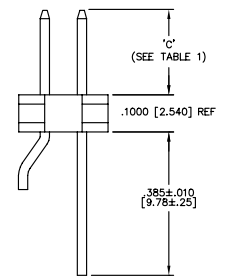
FIG. 4

-MT: MIXED TECHNOLOGY
DIFFERENT AS SHOWN,
OTHERWISE SAME AS FIG. 1
(SEE NOTE 7)

IN-PROCESS 1



IN-PROCESS 2



MATERIAL:
INSULATOR:
LIQUID CRYSTAL POLYMER
COLOR: BLACK
TERMINALS:
PHOSPHOR BRONZE

EXISPROD/ASSEMBLY/100 TSMOH
samtec
 520 PARK EAST BLVD, NEW ALBANY, INDIANA, 47150
 PHONE (812) 944-5733 P.O. BOX 1147
 CODE 55322

PROPRIETARY NOTE
THIS DOCUMENT CONTAINS INFORMATION OF A PROPRIETARY NATURE AND SHALL NOT BE REPRODUCED OR TRANSMITTED IN ANY FORM OR BY ANY MEANS, ELECTRONIC OR MECHANICAL, INCLUDING PHOTOCOPYING, RECORDING, OR BY ANY INFORMATION STORAGE AND RETRIEVAL SYSTEM, WITHOUT THE WRITTEN CONSENT OF SAMTEC INC.

REV. BS

NOTE: "R" = USED MEASURED DIMENSION (REF)
 "S" = $\{("R" - .1969 [5.000]) / 2\} \pm .020 [51]$

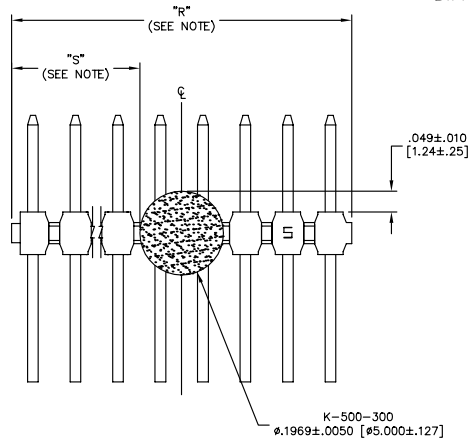
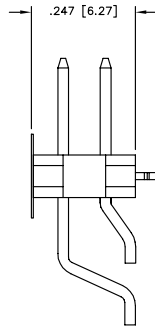
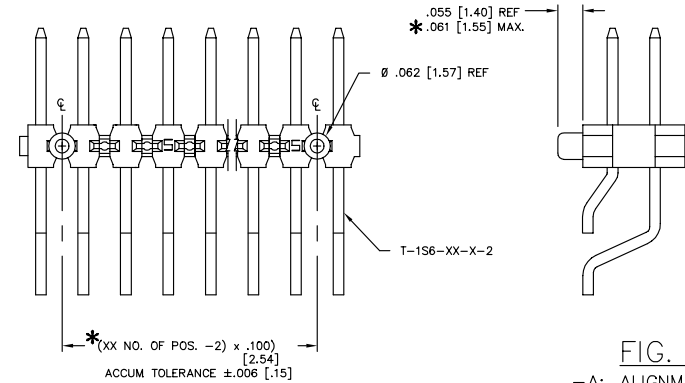


FIG. 5
 -K: POLYAMIDE FILM
 (4 POSITION MINIMUM)
 DIFFERENT AS SHOWN, OTHERWISE
 SAME AS FIG. 1.



DIMENSIONS ARE IN INCHES		UNLESS OTHERWISE NOTED		TOLERANCES ARE:		TITLE:	DWG NO.:
ONE PLACE DECIMALS ± .1 [3]	THREE PLACE DECIMALS ± .005 [13]	ANGLES	± 2°			TERMINAL STRIP DOUBLE SURFACE MOUNT	TSM-1XX-XX-XXX-XX-XX-XXX-XX SHEET 2 OF 3
TWO PLACE DECIMALS ± .01 [3]	FOUR PLACE DECIMALS ± .0020 [69]						



DIFFERENT AS SHOWN, OTHERWISE
 SAME AS FIG. 1.

FIG. 2

-A: ALIGNMENT PIN
 ALIGNMENT PINS APPEAR ON -A OPTION ONLY.
 * STAKED: USE (2) SM-A10H AND TSM-50-DHU
 (CAN BE CUT TO POSITION)
 NOT STAKED: USE TSM-XX-DHU-XX
 (CAN BE CUT TO POSITION)

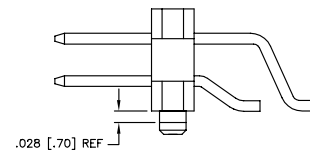
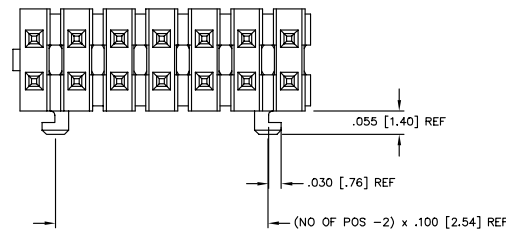
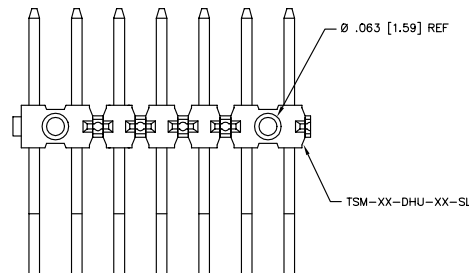


FIG. 6
 -SL: SOLDER LOCK

DIFFERENT AS SHOWN, OTHERWISE
 SAME AS FIG. 1.



PROPRIETARY NOTE
 THIS DOCUMENT CONTAINS INFORMATION
 CONFIDENTIAL AND PROPRIETARY TO
 SAMTEC INC. ANY REUSE, REPRODUCTION,
 REPRODUCTION OR TRANSMISSION TO
 OTHERS WITHOUT THE WRITTEN CONSENT OF
 SAMTEC INC. IS STRICTLY PROHIBITED.
 OTHER THAN THIS FOR WHICH IT HAS
 BEEN SPECIFICALLY DESIGNED AND
 WRITTEN CONSENT OF SAMTEC INC.

		EXISPROD\ASSEMBLY\100
		TSM0H2
520 PARK EAST BLVD, NEW ALBANY, INDIANA 47150 PHONE (812) 944-6733 P.O. BOX 1147 CODE 55322		
MADE BY:	BRATCHER 7-27-95	TSM-1XX-XX-XXX-XX-XX-XXX-XX SHEET 2 OF 3

REV. BS

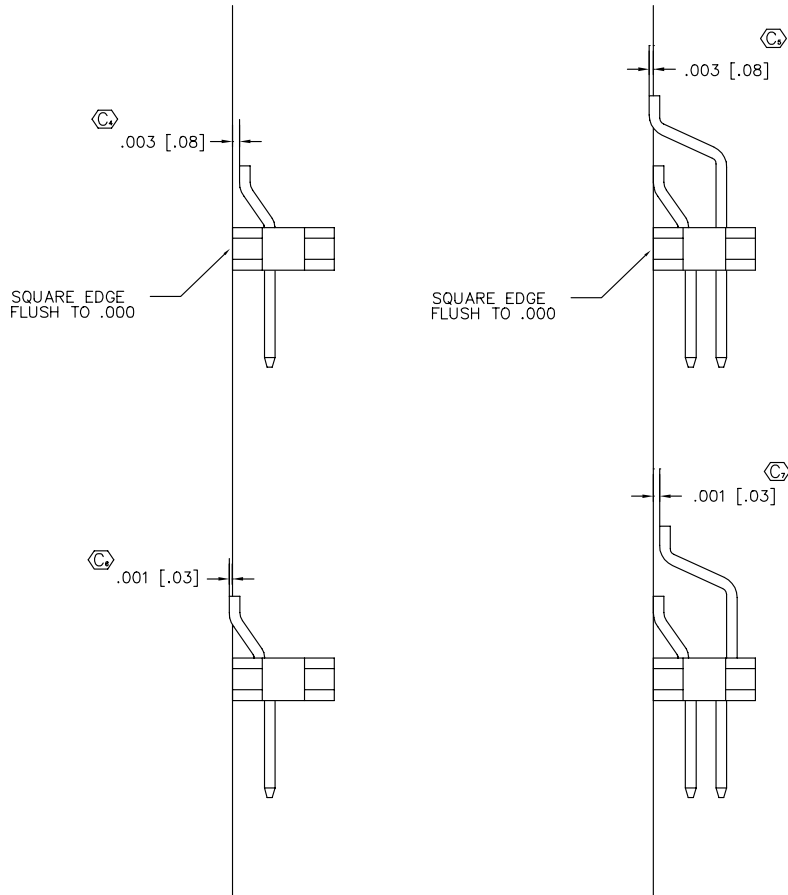
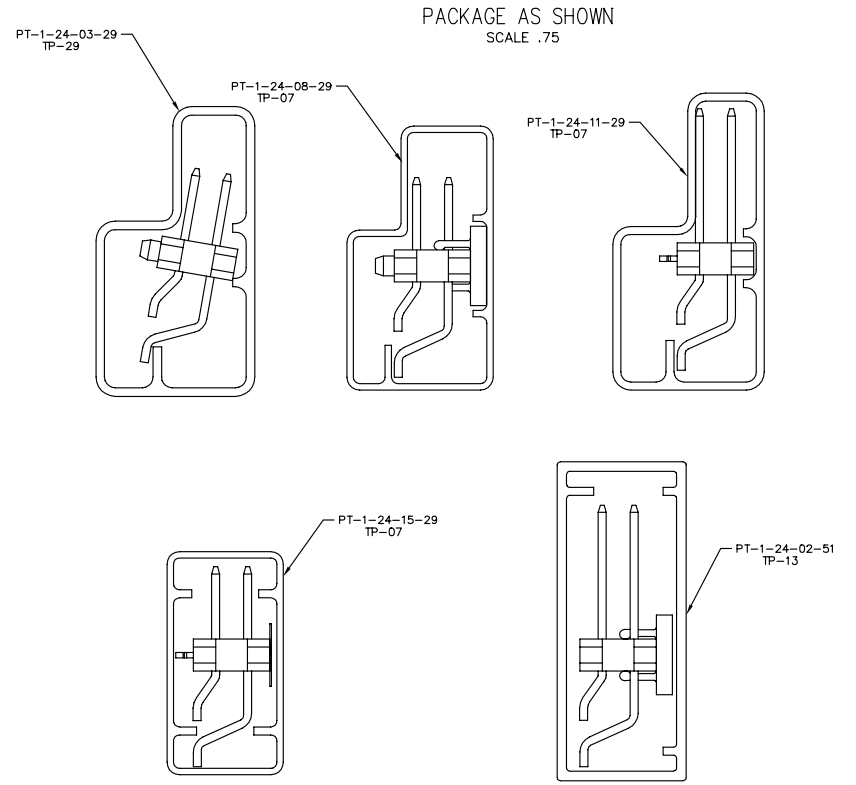


FIG. 7
-DH SURFACEMOUNT DIAGRAM

PROPRIETARY NOTE
THIS DOCUMENT CONTAINS INFORMATION
CONFIDENTIAL AND PROPRIETARY TO
SAMTEC INC. ANY REUSE, REPRODUCTION,
REPRODUCTION OR TRANSMISSION TO
OTHERS WITHOUT THE WRITTEN
CONSENT OF SAMTEC INC. IS
STRICTLY PROHIBITED.

DIMENSIONS ARE IN INCHES		UNLESS OTHERWISE NOTED	TOLERANCES ARE:	TITLE:	DWG NO.:
ONE PLACE DECIMALS ± .1 [3]	TWO PLACE DECIMALS ± .01 [.3]	THREE PLACE DECIMALS ± .005 [.13]	FOUR PLACE DECIMALS ± .0020 [.051]	TERMINAL STRIP DOUBLE SURFACE MOUNT	TSM-1XX-XX-XXX-XX-XX-XXX-XX SHEET 3 OF 3
			ANGLES	± 2°	



PACKAGE TABLE

LEAD STYLE	OPTION	TUBE	PLUG
-01	NONE, -A, -SL, -LC	PT-1-24-03-29	TP-29
-01	ALL -K	PT-1-24-15-29	TP-07
-01	ALL -P	PT-1-24-08-29	TP-07
-02	NONE, -A, -SL, -LC	PT-1-24-03-29	TP-29
-02	ALL -P, ALL -K	PT-1-24-08-29	TP-29
-03	NONE, -A, -SL, -LC	PT-1-24-11-29	TP-07
-03	ALL -P, ALL -K	PT-1-24-02-51	TP-13

EXISPROD\ASSEMBLY\100
TSM0H3

samtec

520 PARK EAST BLVD. NEW ALBANY, INDIANA 47150
PHONE (812) 944-6733 P.O. BOX 1147
CODE 55322

MADE BY: BRATCHER 7-27-95

TSM-1XX-XX-XXX-XX-XX-XXX-XX
SHEET 3 OF 3